

Click **Assignments**, to see what homework has been set

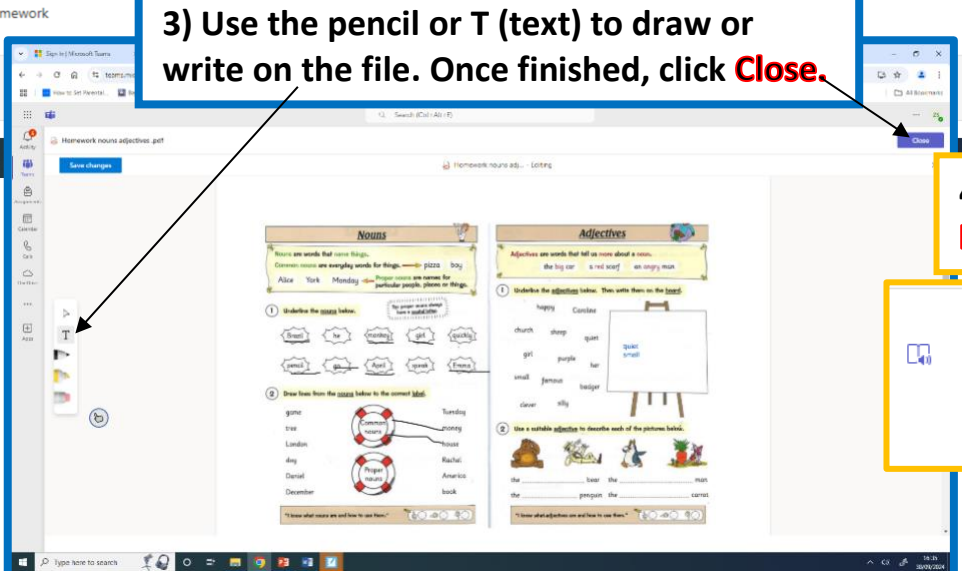
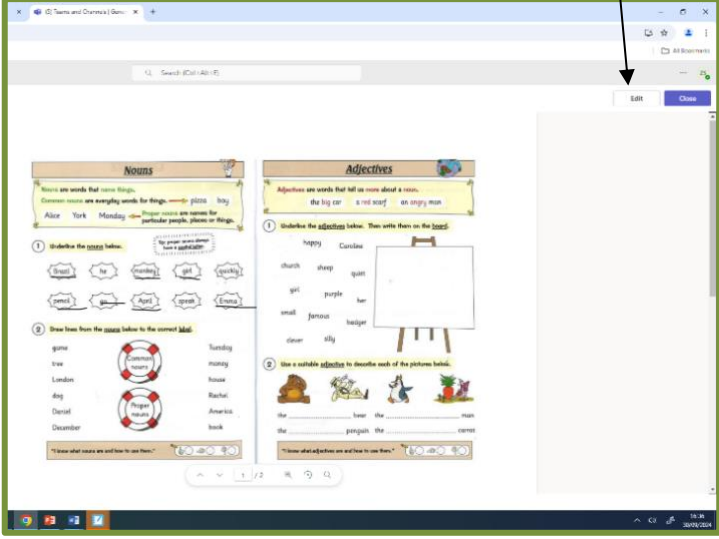
2) You will see the homework and its **due date**.
Click each tab to complete your homework

3) Once the file is opened – click **Edit** to be able to write on the homework

3) Use the pencil or T (text) to draw or write on the file. Once finished, click **Close**.

4) Finally select **Hand In**

Hand in button with 'Not handed in' status indicator.



Hand in button with 'Not handed in' status indicator.